

HDMI – CAT6 Converter

HDMI to CAT6 and CAT6 to HDMI Converters



WirelessKable Inc.

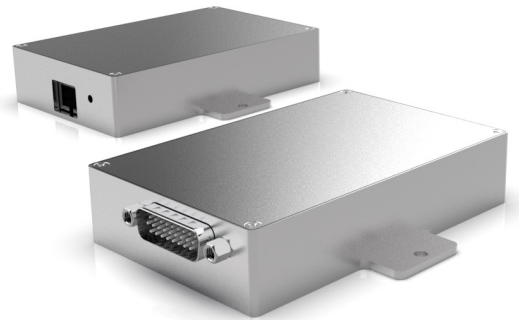
Document Revision: A

SPECIFICATIONS

Input Voltage	5 VDC
Input Current	0.2 A
HDMI Interface	D-Sub 26 HD
CAT6 Interface	RJ-45
HDMI	480i@60Hz, 480p@60Hz, 576i@50Hz, 576p@50Hz, 720p@50/60Hz, 1080i@50/60Hz, 1080p@50/60Hz
Extender	High-quality CAT6/CAT6a/CAT7 required, preferably longer than 50ft/15m for better performance
Audio	Only supports the PCM audio output
Weight	0.286 lb (130 g)
Dimensions	Product 2.7" W / 4.14" L / 0.9" H
Mounting	Flange
Certification	RTCA DO-160G
Applications	Aerospace, Automotive, Military
Appearance	Standard - Gray Anodized
Used With	551-5017-001 - 5VDC20 551-5607-001 - USB-C to HDMI
Copy Protection	HDMI input is unable to capture from copy-protected HDMI sources.
MTBF	300,000 Hours

ORDERING INFORMATION

Part Number	551-5717-001
Description	HDMI to CAT6 Converter
Part Number	551-5717-002
Description	CAT6 to HDMI Converter



DESCRIPTION

Those products are designed to extend HDMI connectivity via a single CAT6 cable.

FEATURES

- A simple way to extend the HDMI signal over the cabin
- Cost-effective solution